

DALDOSS

GOODS

ATTENDANT

FREIGHT LIFT

***Microfreight***<sup>®</sup>

STRONG

STABLE

DURABLE

ACCURATE

### Microfreight introduction

The freight lift Microfreight Daldoss offers the **strong and reliable** solution for the transport of goods only as **Microfreight Classic** as well as goods with passengers as **Microfreight Plus**. Particularly suitable to industries and any other environment where the handling of heavy goods is needed.

a product certified by



daldoss microfreight  
the strong freight lift  
to handle heavy goods

***Microfreight***<sup>®</sup> Classic

***Microfreight***<sup>®</sup> Plus



### Operation

The electrical traction drive grants superior performance and high level of quietness in motion.



### Accuracy

The microprocessors controller can be personalized with the option of VVVF speed adjustment of the car (standard on lifts with capacity 1800-2000 kg) allowing for a highly accurate floor levelling of heavy goods.



### Plus version

Standard feature to temporarily reserve the car at floor to ease the load/download operations. Optional key in the car COP to disable commands and light curtains for use as "goods only".





### Personal Configuration

The headroom of the lift can, for the majority of models, be free of anchoring point and/or in an outdoor environment like, for example, a terrace.



### Goods with Attendant

With the "Plus" version, the option to accompany the goods for up to two attendants in the car to simplify the load-unload operations.



### Ideal for Industries

The large capacity both in terms of encumbrance as well as of weight makes easy the handling of goods inside warehouses.



### Turnkey Installation

The required pit of only 150mm or 180 mm and the reduced headroom, together with the standard supporting structure with steel plate cladding as an option, reduce to the minimum the masonry works required for the installation.



### Finishes and options

Ample choice of colours and options to design the perfect lift for your needs.



# Main advantages



## Technical features

**Traction:** Electrical , rope traction with gear motor equipped with double brake to avoid uncontrolled movements.

**Operation:** **Classic:** automatic from the floors.  
**Plus:** "Constant pressure" (hold-to-run) in the car and automatic from the floors.

**Rated Load:** **Classic:** 500-750-1000-1500-2000kg  
**Plus:** 500-750-1000-1400-1800kg

**Stop:** Max. 8

**Travel:** Up to 15m

**Speed:** **Classic:** max 0.19 m/s with option of VVVF speed regulator (standard on 2000 kg capacity)  
**Plus:** max 0.15 m/s with option of VVVF speed regulator (standard on 1800kg capacity)

**Headroom:** Minimum of 2800 mm (it may vary depending on model and height of car)

**Pit:** Min. 150 mm for capacity up to 1500kg  
Min. 180 mm for capacity above 1500kg

**Power supply:** 400V three phase 50/60 Hz

**Motor power:** 3,0 kw for capacity up to 1500kg  
4,0 kw for capacity above 1500kg

**Car entrances:** 1 or 2 opposite

**Car:** Closed, with baked oven enamel RAL 7038 (pearl gray), checkered aluminum floor, LED bars illumination. Bumper guards on car walls and light curtain in Cat.2 on each car entrance. (Only for Plus version).

**Floor Doors:** Manual with single or double panel with 180° opening baked oven enamel RAL 7038 (pearl gray). Mechanical lock and electrical contact with removable bridge. Lower floor doors with manual resetting.

**Car Pushbuttons:** (Plus only) Stainless steel plaque AISI304, floor selections pushbuttons in stainless steel activated with constant pressure. Alarm pushbutton, emergency stop and optional key disabling car controls operation.

**Floor Pushbuttons:** Satin stainless steel plaque AISI304, stainless steel floor pushbutton with universal call and send operation with green light indicating presence of car at floor and red light for lift busy or on arrival at floor.

**Supporting structure** Standard, made of bolted elements for indoor installation. Finishing in baked oven enamel RAL 7038 (as standard), available in any other RAL color from the Daldoss range or other RAL (option). Option of structure cladding in steelplate baked oven enamel to be applied on the external face of the structure (+ 20 mm for each side).  
Option of top roof for indoor.

**Norms:**

- EN 1993-1:EUROCODE 3 "Design of steel structures"
- NTC 2018: MINISTERIAL DECREE 17 JANUARY 2018 "Technical Norms for Constructions"
- CR UNI 10011 – June 1988. "Steel Constructions, Instructions for the calculation, execution, testing and maintenance"
- EN 1090-1 "Execution of steel and aluminum structures - Part 1: Requisites for the conformity evaluation of structural components"
- EN 1090-2 "Execution of steel and aluminum structures - Part 2: Technical requisites for steel structures"
- Machine Directive 2006/42/EC

### and with reference to:

- UNI EN 81-31:2010 (Safety rules for the lifts construction and installation - Lifts carrying goods only
- Part 31: Lifts accessible to goods only).
- UNI EN 13015:2008 (norm on drafting maintenance instructions for lifts and escalators).

### Microfreight Plus also with reference to:

- UNI EN 81-41:2010 (Safety rules for the lifts construction and installation - Special lifts for the transport of goods and passengers -Part 41: Vertical platform lifts also provided for use by persons with impaired mobility)

technical  
features

## Standard



Drive unit and controller placed at lower floor and connected to the supporting structure (option to position unit at other floors)



Safety optical barrier (light curtain) in Class 2 (only for Plus)



Manual single hinged landing door baked oven enamel RAL 7038 (option of window pane for Classic)



Manual double hinged landing door baked oven enamel RAL 7038 (option of window panes for Classic)



Landing door internal closing handle (only for Plus)



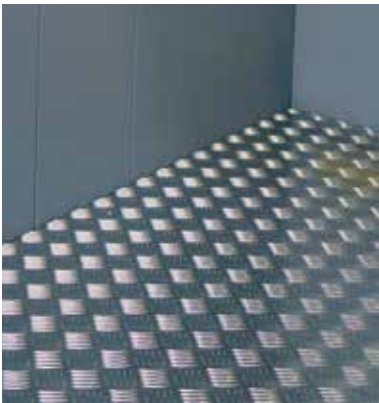
Bumper guard (option for Classic)



Floor pushbutton



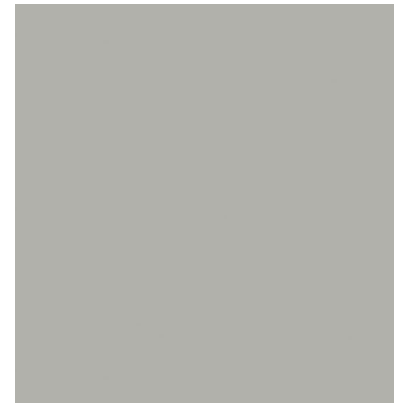
Car pushbutton (only for Plus)



Non-slip aluminum checkered car floor



Car illumination LED bars



Oven baked enamel pearl gray RAL 7038

s t a n d a r d



## Options



Intercom system



Machine room cabinet  
WxDxH 1450x450x1860 mm

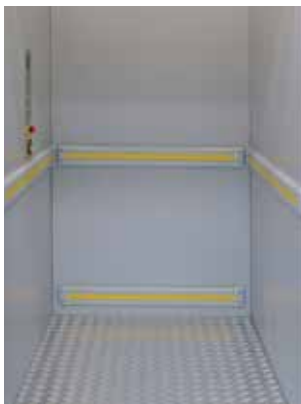


Lock switch enabling  
buttons on floor  
pushbuttons plaque



Digital  
display for  
car position

Lock switch IN-OUT to disable  
commands and light curtains  
(exclusive use for goods  
only transport)



Additional Bump Guards



Fire-resistant, double panel  
floor doors EI60-EI120  
(opening at 90°)



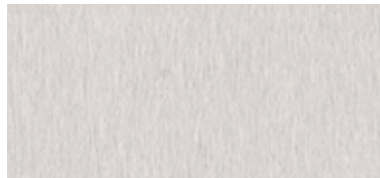
Load drop bar  
(only for Classic)



Car foldable gate  
(only for some Classic models)



Additional RAL colors available



Satin stainless steel AISI 304 or AISI 316



Scratch-resistant stainless steel



Car flooring in non-slip rubber  
color charcoal DG71



Car flooring in non-slip rubber  
color gravel DG75

options

# MICROFREIGHT CLASSIC

## Dimensions of shaft, car and floor doors of standard models (mm)

Model	Entrances	Capacity (kg)	Car (mm)		Car & Doors Height standard (mm)	Door 1b = 1 panel 2b = 2 panels	Structure (mm)		Pit min (mm)	Headroom min (mm)
			CW*	CD			CH & DH**	DW***		
B	A o C	500 - 750	1060	1280	1800-2000-2200-2400	1010-1B	1550	1450	150	CH+920
B	AC	500 - 750	1060	1310	1800-2000-2200-2400	1010-1B	1550	1450	150	CH+920
B	A o C	1000	1060	1280	1800'-2000-2200-2400	1010-1B	1550	1450	150	CH+920
B	AC	1000	1060	1310	1800'-2000-2200-2400	1010-1B	1550	1450	150	CH+920
EU	A o C	500	1360	1280	1800-2000-2200-2400	1310-2B	1850	1450	150	CH+920
EU	AC	500	1360	1310	1800-2000-2200-2400	1310-2B	1850	1450	150	CH+920
EU	A o C	750 - 1000	1360	1280	2000-2200-2400	1310-2B	1850	1450	150	CH+920
EU	AC	750 - 1000	1360	1310	2000-2200-2400	1310-2B	1850	1450	150	CH+920
S	A o C	750 - 1000	1060	1780	1800-2000-2200-2400	1010-1B	1550	1950	150	CH+920
S	AC	750 - 1000	1060	1810	1800-2000-2200-2400	1010-1B	1550	1950	150	CH+920
D-UCH°	A o C	1000	1460	1500	1800-2000	1410-2B	1950	1670	150	CH+800''
D-UCH°	AC	1000	1460	1530	1800-2000	1410-2B	1950	1670	150	CH+800''
D	A o C	1000	1460	1500	1800-2000-2200-2400	1410-2B	1950	1670	150	CH+920
D	AC	1000	1460	1530	1800-2000-2200-2400	1410-2B	1950	1670	150	CH+920
D-UCH°	A o C	1400	1460	1500	1800-2000	1410-2B	1950	1670	150	CH+800''
D-UCH°	AC	1400	1460	1530	1800-2000	1410-2B	1950	1670	150	CH+800''
D	A o C	1500	1460	1500	2000-2200-2400	1410-2B	1950	1670	150	CH+1150
D	AC	1500	1460	1530	2000-2200-2400	1410-2B	1950	1670	150	CH+1150
D	A o C	2000	1460	1500	2000-2200'	1410-2B	1950	1670	180	CH+1180
D	AC	2000	1460	1530	2000-2200'	1410-2B	1950	1670	180	CH+1180
DS-UCH°	A o C	1000	1460	1780	1800-2000	1410-2B	1950	1950	150	CH+800''
DS-UCH°	AC	1000	1460	1810	1800-2000	1410-2B	1950	1950	150	CH+800''
DS	A o C	1000	1460	1780	1800-2000-2200-2400	1410-2B	1950	1950	150	CH+920
DS	AC	1000	1460	1810	1800-2000-2200-2400	1410-2B	1950	1950	150	CH+920
DS-UCH°	A o C	1400	1460	1780	2000	1410-2B	1950	1950	150	CH+800''
DS-UCH°	AC	1400	1460	1810	2000	1410-2B	1950	1950	150	CH+800''
DS	A o C	1500	1460	1780	2000-2200-2400'	1410-2B	1950	1950	150	CH+1150
DS	AC	1500	1460	1810	2000-2200-2400'	1410-2B	1950	1950	150	CH+1150
DS	A o C	2000	1460	1780	2000-2200'	1410-2B	1950	1950	180	CH+1180
DS	AC	2000	1460	1810	2000-2200'	1410-2B	1950	1950	180	CH+1180
XDS	A o C	750	1460	2180	1800-2000-2200'	1410-2B	1950	2350	150	CH+920
XDS	AC	750	1460	2210	1800-2000-2200'	1410-2B	1950	2350	150	CH+920
XDS-UCH°	A o C	1000^	1460	2180	2000	1410-2B	1950	2350	150	CH+800''
XDS-UCH°	AC	1000^	1460	2210	2000	1410-2B	1950	2350	150	CH+800''
XDS	A o C	1000	1460	2180	2000'-2200'	1410-2B	1950	2350	150	CH+1150
XDS	AC	1000	1460	2210	2000'-2200'	1410-2B	1950	2350	150	CH+1150

### Notes:

CW\* net car span with bumper guards = CW-50mm

DW\*\*\* with standard doors opening 180°; with doors opening 90° = DW-30mm

SW\*\*\*\* add additional 450 mm, only at floor where machine room cabinet is installed, always sideways to the structure

^ With car foldable gate capacity is reduced to 750kg

° Car foldable gate option not available

'' With option of safety gear on counterweight CH+850

° UCH (Ultra Compact Headroom) = Reduced headroom for models D, DS, XDS

Other models and dimensions available upon request.

Daldoss Elevetronic S.p.A: reserves the right to make changes to the characteristics and dimensions of the models in the catalogue, in compliance with statutory legislation, without prior notice to the customer.

# MICROFREIGHT PLUS

## Dimensions of shaft, car and floor doors of standard models (mm)

Model	Entrances	Capacity (kg)	Car (mm)		Car & Doors Height standard (mm)	Door 1b = 1 panel 2b = 2 panels	Structure (mm)		Pit min (mm)	Headroom min (mm)
			CW*	CD			CH & DH	SW***		
B	A o C	500 - 750 - 1000	1060	1280	2000-2200	1010-1B	1550	1450	150	CH+920
B	AC	500 - 750 - 1000	1060	1310	2000-2200	1010-1B	1550	1450	150	CH+920
EU	A o C	500 - 750 - 1000	1360	1280	2000-2200	1310-2B	1850	1450	150	CH+920
EU	AC	500 - 750 - 1000	1360	1310	2000-2200	1310-2B	1850	1450	150	CH+920
S	A o C	750 - 1000	1060	1780	2000-2200	1010-1B	1550	1950	150	CH+920
S	AC	750 - 1000	1060	1810	2000-2200	1010-1B	1550	1950	150	CH+920
D-UCH°	A o C	1000	1460	1500	2000	1410-2B	1950	1670	150	CH+800''
D-UCH°	AC	1000	1460	1530	2000	1410-2B	1950	1670	150	CH+800''
D	A o C	1000	1460	1500	2000-2200	1410-2B	1950	1670	150	CH+920
D	AC	1000	1460	1530	2000-2200	1410-2B	1950	1670	150	CH+920
D-UCH°	A o C	1400	1460	1500	2000	1410-2B	1950	1670	150	CH+800''
D-UCH°	AC	1400	1460	1530	2000	1410-2B	1950	1670	150	CH+800''
D	A o C	1400	1460	1500	2000-2200	1410-2B	1950	1670	150	CH+1150
D	AC	1400	1460	1530	2000-2200	1410-2B	1950	1670	150	CH+1150
D	A o C	1800	1460	1500	2000-2200	1410-2B	1950	1670	180	CH+1180
D	AC	1800	1460	1530	2000-2200	1410-2B	1950	1670	180	CH+1180
DS-UCH°	A o C	1000	1460	1780	2000	1410-2B	1950	1950	150	CH+800''
DS-UCH°	AC	1000	1460	1810	2000	1410-2B	1950	1950	150	CH+800''
DS	A o C	1000	1460	1780	2000-2200	1410-2B	1950	1950	150	CH+920
DS	AC	1000	1460	1810	2000-2200	1410-2B	1950	1950	150	CH+920
DS-UCH°	A o C	1400	1460	1780	2000	1410-2B	1950	1950	150	CH+800''
DS-UCH°	AC	1400	1460	1810	2000	1410-2B	1950	1950	150	CH+800''
DS	A o C	1400	1460	1780	2000-2200	1410-2B	1950	1950	150	CH+1150
DS	AC	1400	1460	1810	2000-2200	1410-2B	1950	1950	150	CH+1150
DS	A o C	1800	1460	1780	2000-2200	1410-2B	1950	1950	180	CH+1180
DS	AC	1800	1460	1810	2000-2200	1410-2B	1950	1950	180	CH+1180
XDS	A o C	750	1460	2180	2000-2200	1410-2B	1950	2350	150	CH+920
XDS	AC	750	1460	2210	2000-2200	1410-2B	1950	2350	150	CH+920
XDS-UCH°	A o C	1000	1460	2180	2000	1410-2B	1950	2350	150	CH+800''
XDS-UCH°	AC	1000	1460	2210	2000	1410-2B	1950	2350	150	CH+800''
XDS	A o C	1000	1460	2180	2000-2200	1410-2B	1950	2350	150	CH+1150
XDS	AC	1000	1460	2210	2000-2200	1410-2B	1950	2350	150	CH+1150

### Notes:

CW\*\* net car span with bumper guards = CW-50mm

DW\*\*\* with standard doors opening 180°; with doors opening 90° = DW-30mm

SW\*\*\*\* add additional 450 mm, only at floor where machine room cabinet is installed, always sideways to the structure

'' With option of safety gear on counterweight CH+850

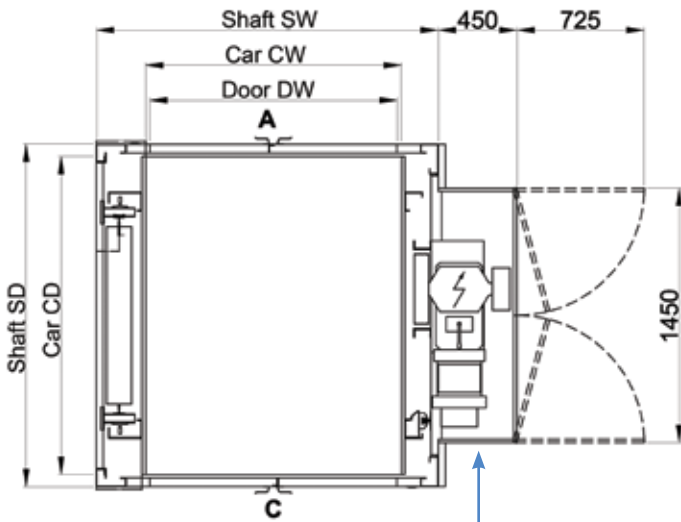
° UCH (Ultra Compact Headroom) = Reduced headroom for models D, DS, XDS

Other models and dimensions available upon request.

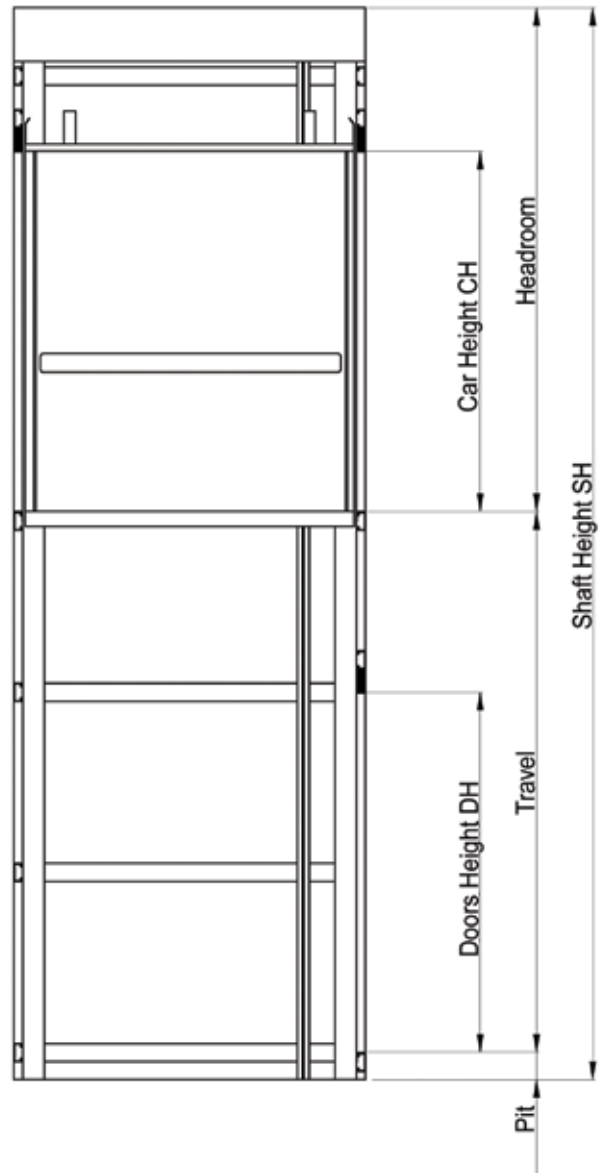
Daldoss Elevetronic S.p.A: reserves the right to make changes to the characteristics and dimensions of the models in the catalogue, in compliance with statutory legislation, without prior notice to the customer.

# standard models

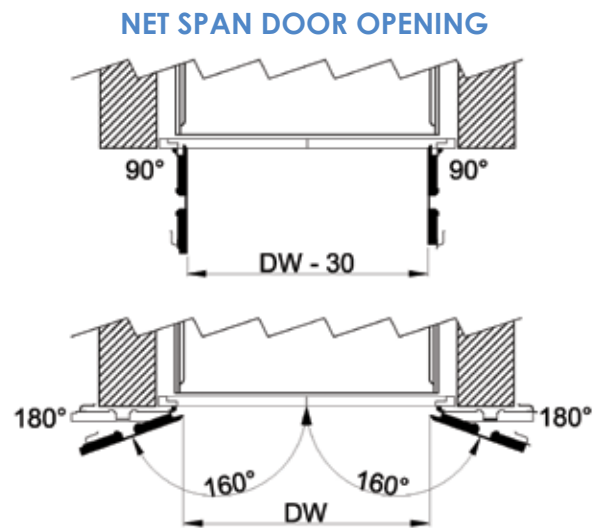
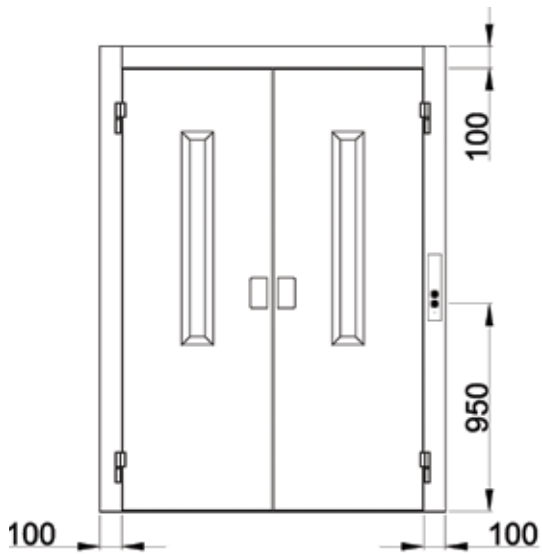
# Drawings



Drive unit cabinet + controller only at the chosen floor



## Doors Details



Hotel, United Kingdom



Office, United Kingdom



Warehouse, United Kingdom



Car spare parts warehouse, Italy

# installations



Wholesale Trade Warehouse, United Kingdom



Warehouse, The Netherlands



Warehouse, United Kingdom



installations

Let us help you...

At Daldoss we simply try to make life easier for our customers and users of our lifts. Our experienced staff can assess your individual needs and advise on the ideal lift product - working with you through to installation of your lift.



Quality  
Management  
System ISO 9001



Structural Steel  
CE Marking EN 1090-1  
class EXC2

**daldoss**  
**design**

Daldoss Elevelectronic Spa



Do you  
want more  
information?



### Daldoss EleveTronic Spa

Via al Dos de la Roda, 18  
38057 Pergine Valsugana (Tn) - Italy

T. (0039) 0461 51 86 11  
F. (0039) 0461 51 86 54  
sales@daldoss.com

[www.daldoss.com](http://www.daldoss.com)

